

Family Plan



Why Assure?

We are a company with 70 years of experience in providing comprehensive services, with high human sense and excellent quality standards.

More than 2,500 organizations are our clients throughout Latin America and the United States.

We provide more than 10,000 funeral services per year, keeping our promise of high quality services.



Assure For Life is the best Funeral Assistance Plan in the United States, and starting today, you can give families the peace of mind to protect themselves from the inevitable.



We cover all funeral expenses in the United States, Latin America and the Caribbean.



We receive parents up to 80 years old.

Transfer on all coverage routes.



We do not do medical exams.

We do not ask for immigration status.

Our human warmth and product quality are unmatched.



Assure For Life (Funeral Assistance) Compared To Life Insurance

ASSURE FOR LIFE PRE EXISTING CONDITIONS

TERMINAL STATE
CANCER
DIALYSIS
BRAIN TUMOR

LIFE INSURANCE

OBESITY 42.4% OF POPULATION
HIGH CHOLESTEROL
DIABETES
CHRONIC ILLNESS

Cancer
Diabetes
HIV/AIDS
Heart disease
Parkinson's disease
Asthma
Alzheimer's disease

HAZARDOUS OCCUPATIONS

Airline pilots and flight engineers
Logging workers
Fishers and related fishing workers
Roofers
Refuse and recyclable material collectors
Structural iron and steel workers
Truck drivers
Farmers, ranchers, and other agricultural managers
Construction laborers
Electrical power-line installers and repairers
Police and sheriff's patrol officers

AGE,
Blood or protein in urine, alcoholism,
financial reasons
(under 20k per year)
previously denied

Our headquarters



Member of the Latin American Association of Cemeteries and Funeral Services



Member of the Remanso Funeral Network



- Colombia 1950
- Venezuela since 1994
- Costa Rica since 2001
- Mexico since 2006
- Unite States since 2007
- Panama since 2009

Coverage

- ✓ Extends through the United States, the Caribbean, and Latin America

Waiting periods

- ✓ The plan offers protection for accidental or violent death (3) three business days after enrollment (once the first payment has been made),
- ✓ Natural death one hundred eighty days (180) after enrollment (once the first payment has been made)
- ✓ Non-payment for 3 continuous months will generate automatic cancellation of the plan.

Benefits

- ✓ Assure covers standard funeral expenses
- ✓ We transfer the remains of your loved one to their country of origin or final destination of rest.
- ✓ Provides an airline ticket (1) exclusively for the policy holder to accompany the service of their loved one.
- ✓ Protects parents or partners of policy holder up to age 80. (max. 2 people over the age of 65).

Our funeral assistance plan offers
three options for its members,
but only delivers one of them at the time of requesting a service.

National Option

Transfers within the United States.

Covers all basic funeral expenses in the United States.

Includes cremation and standard urn or casket and hearse to the cemetery.

Airline ticket in order to attend the funeral service of your loved one.

Roots option

Covers all basic funeral expenses in Latin America.

Includes Cremation or burial
Limited amount according to ways, uses and customs.

Round-trip air line ticket exclusively for the main policy holder.

Return Option

Provides transfer for the remains of your loved one to their home state or country of origin.

Transfers only between the United States, the Caribbean and Latin America
Viewing at destination.

Covers basic funeral expenses at the destination.

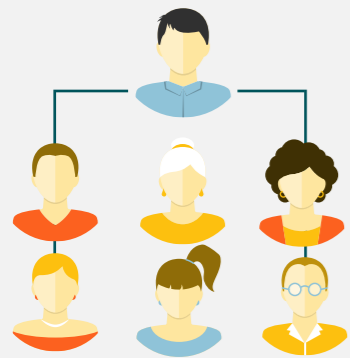
Airline ticket in order to attend the funeral service of your loved one.

Receiving of your loved one at destination.

Family Plan

You can protect up to 7 people in USA, Latin America and Caribbean

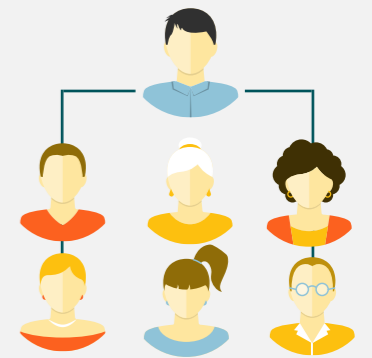
In all remaining 45 states, Washington D.C.
and the United States Virgin Islands



\$ 900.00
Family group annual

in the states of Florida, North Carolina,
South Carolina, New York, California and
Puerto Rico.

\$ 720.00
Family group annual



Ask about our special offers!

One-time initial registration fee of \$30

If the members are over 65 years old or the plan holder is in one of the remaining 45 states,
Washington D.C and the US Virgin Islands the annual fee will be \$900.00.

Silver Plan

Assure, thinking about the needs of its customers puts at your disposal the Silver Plan, special for people between 66 and 75 years. Paying a single registration fee of \$20.00 USD



One-person
Silver Plan
\$720
from 66 to 75 years



Two-person
Silver Plan
\$900
Beneficiary
from 0 to 75 years
without degree
of kinship

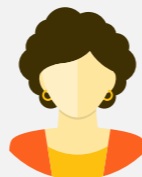


For low cost states like:

California, New York, Florida, North Carolina y South Carolina and Puerto Rico



One-person
Silver Plan
\$540
from 66 to 75 years



Two-person
Silver Plan
\$720
Beneficiary
from 0 to 75 years
without degree
of kinship



plan
Silver



Business
GROWTH

Assure
For Life

Get active by acquiring your Family Assistance Plan



- In order to access the platform, you must go through your sponsor.
(RECEIVE A LINK FROM THE APPLICATION)
- You must take the course **(COMPLETE THE TRAINING)** and pass the certification exam.
- You will start with a 35% commission on your personal sales.



Promotions for direct sales

\$900 Annual Plan



Beginner 35%

Junior 40%

Senior 50%

Director 55%



6 Sales

10 Sales

25 Sales

\$315

\$360

\$450

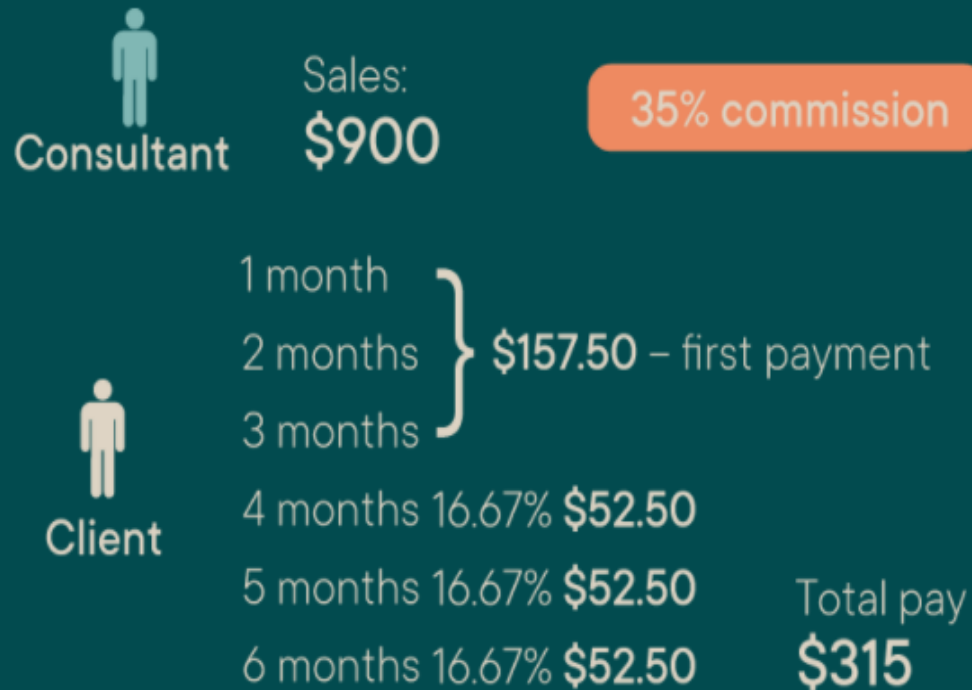
\$495

Earn promotion bonuses!

BEGINNER:

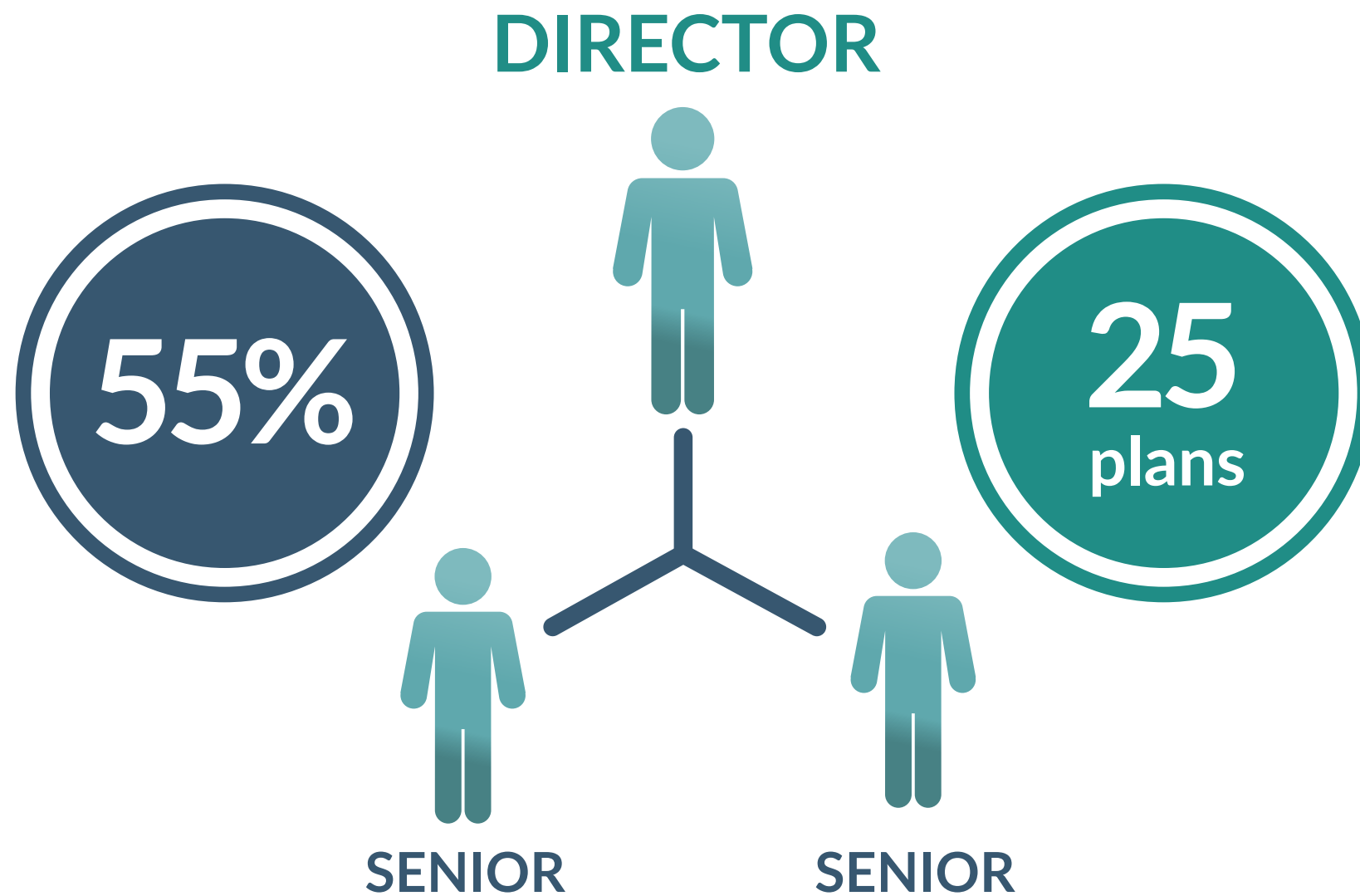
Commission is paid with the collection of the first 6 months. Therefore, if you make annual or semi-annual sales you will receive the commission of those sales in full.

EXAMPLE



EXAMPLE

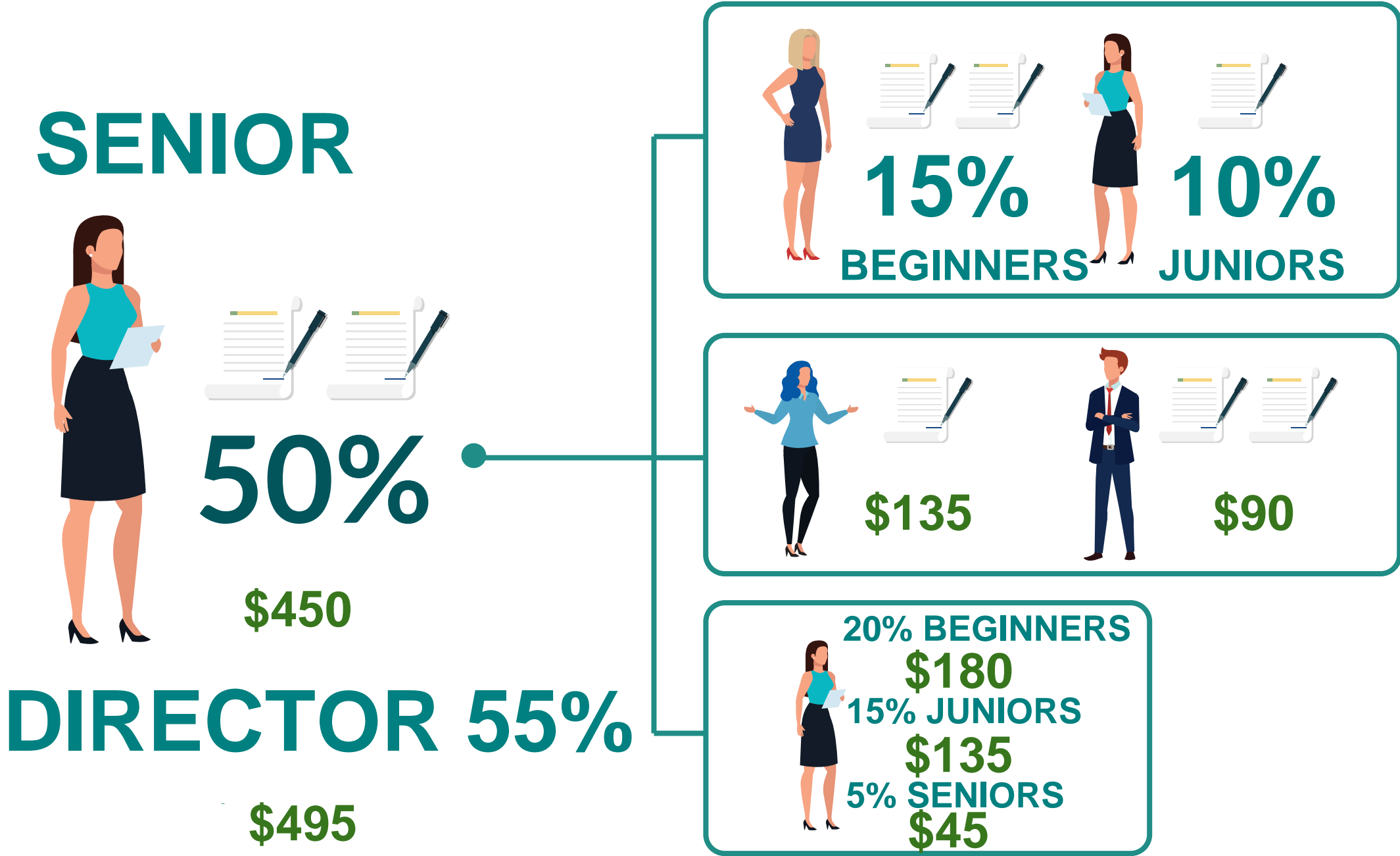




With only 25 sales, with a minimum of two personal sales

- Two SENIOR teams of independent structures.
- Or have at least one SENIOR and 10 BEGINNERS or JUNIORS with sales.

Promotions for direct sales and teams



Promotion Categories

| | SENIOR | DIRECTOR | LEADER | MANAGER | DIV. MANAGER | REGIONAL M. |
|----------|--------|----------|--------|---------|--------------|-------------|
| VP | 50% | 55% | 60% | 65% | 70% | 80% |
| BEGINNER | 15% | 20% | 25% | 30% | 35% | 45% |
| JUNIOR | 10% | 15% | 20% | 25% | 30% | 40% |
| SENIOR | 0% | 5% | 10% | 15% | 20% | 30% |



| % from Beginner | Levels | Commission | Res. Direct | Res. Team | Annual Sales |
|------------------------|-------------------------|-------------------|--------------------|------------------|---------------------|
| 0% | Beginner | 35% | 1% | 0% | \$600.00 |
| 0% | Junior | 40% | 1% | 0% | \$3,600.00 |
| 15% | Senior | 50% | 2% | 0% | \$6,000.00 |
| 20% | Director | 55% | 4% | 1% | \$15,000.00 |
| 25% | Leader | 60% | 4% | 1% | \$31,200.00 |
| 30% | Manager | 65% | 4% | 1% | \$61,000.00 |
| 35% | Division Manager | 70% | 4% | 2% | \$121,200.00 |
| 45% | Regional Manager | 80% | 4% | 2% | \$241,200.00 |

Commissions

Two cuts are made for the payment of commissions as follows:

- Personal sales commissions are paid from the first of the month until the 15th or the last business day before the 15th.
- From the first cut-off until the last business day of the month at 11:00 a.m. EST commissions are paid on personal sales and commissions on team sales for the entire calendar month.

Testimonial Videos

Pastor Rose Testimony

WHAT I AM OFFERING

Free Facebook Training Group

How to get 100's of leads for Free (1 hour video)
Facebook organic leads training (video course)

Free 2-page website with videos and your contact info

30 day Free Access to our Assure Connector & CRM Messenger

Generate 5-15 leads daily on Facebook
After 30 days \$49.97/month (reg price \$69.97 - \$99.97/month)



HOW TO GET STARTED - BE A PRODUCT OF THE PRODUCT

Complete Application For Family Plan or Silver Plan

Pay 3 Months Up Front Plus **\$30** Registration Fee **\$255** Low States **\$210**

Enroll As An Agent/Consultant

Complete Certification Training And Pass Test

[Click Here To Download Application](#)